



NATCAN

National Cancer Audit Collaborating Centre



Royal College
of Surgeons
of England

ADVANCING SURGICAL CARE

National Cancer Audit Collaborating Centre (NATCAN) & the future direction of the NPCA

NPCA Quality Improvement Workshop 03.02.23

Julie Nossiter

Director of Operations, NATCAN

Assistant Professor, LSHTM

New national centre, new cancer audits

- National centre

- RCSEng

- Ovar

- Panc

- Kidne

- Non-

- Sepa

- Replac

Share
f
Twitter
NHS funding of £5.4m will enable experts to carry out five national cancer audits over three years

“Over the past 15 years, our national clinical audits have shone an important spotlight on NHS cancer care across England and Wales, helping NHS hospitals to improve their services for patients.”

Professor Neil Mortensen
President of the Royal College of Surgeons of England



Dame Cally Palmer

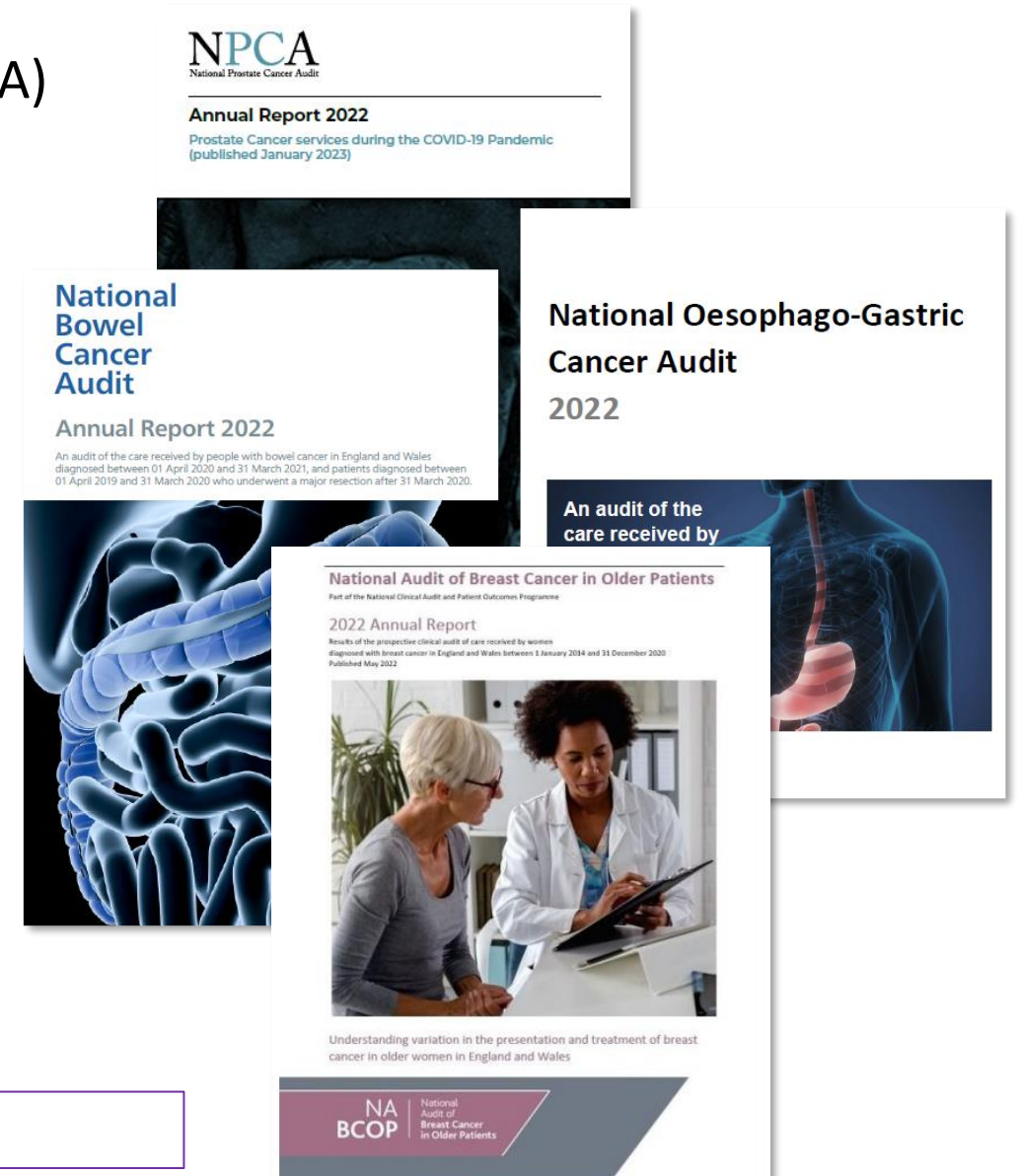
important role in widening our understanding of the treatment that cancer patients receive from the NHS and will allow us to achieve more consistent outcomes for people across the country.”

David Cromwell
Professor of Health

Existing cancer audits

- National Oesophago-Gastric Cancer Audit (NOGCA)
 - www.nogca.org.uk
- National Bowel Cancer Audit (NBOCA)
 - www.nboca.org.uk
- National Prostate Cancer Audit (NPCA)
 - www.npca.org.uk → Since 2013
- National Audit of Breast Cancer in Older Patients (NABCOP)
 - www.nabcop.org.uk
- National Lung Cancer Audit (NLCA)
 - www.lungcanceraudit.org.uk

NPCA moves into the centre from 1st July 2023



NATCAN: maintain key features

- Close clinical-methodological collaboration
- Close links with all stakeholder groups
 - Clinical professional bodies
 - NHS commissioners
 - Regulators (CQC)
 - Patients, charities, public

Commissioned by **HQIP** on behalf of **NHS England** and **Welsh Government**

Based at the **Clinical Effectiveness Unit,**
Royal College of Surgeons of England / London School of Hygiene & Tropical Medicine

Clinical leadership provided by **BAUS** and **BUG**

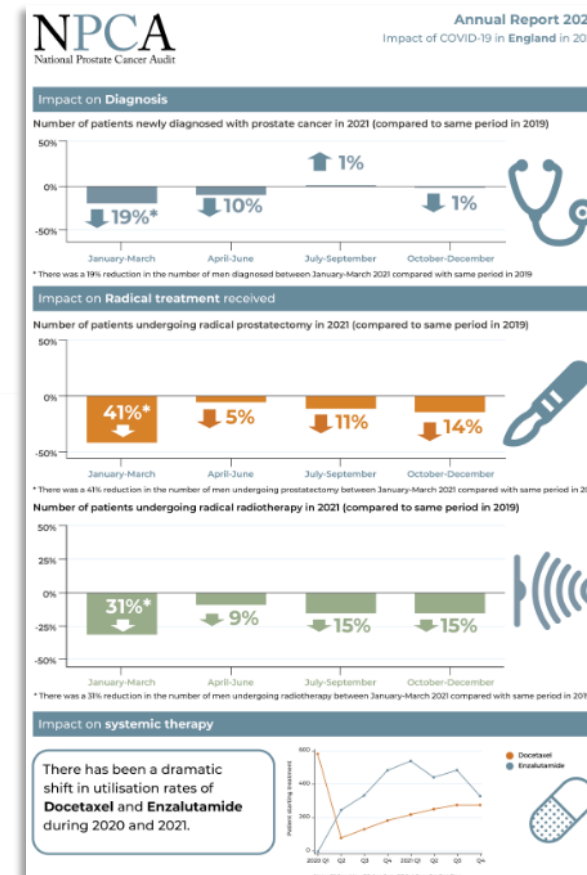
Data partners: **National Cancer Registry and Analysis Service, Wales Cancer Network**



Patient charities: **PCUK** and **Tackle Prostate Cancer**



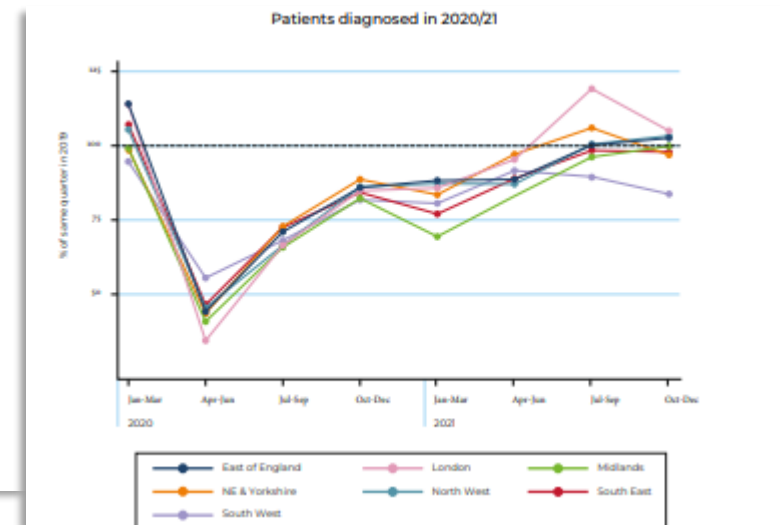
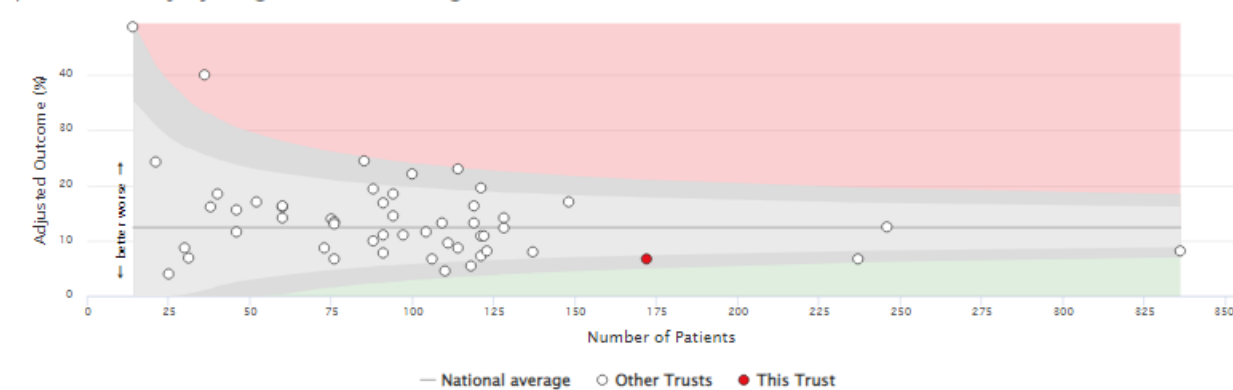
With support from: **NPCA PPI Forum** and **BAUN**



NATCAN: maintain key features

- Close clinical-methodological collaboration
- Close links with all stakeholder groups
 - Clinical professional bodies
 - NHS commissioners
 - Regulators (CQC)
 - Patients, charities, public
- Use of national (existing and linked) datasets only

Adjusted funnel plot for the proportion of patients readmitted as an emergency within 90 days of radical prostatectomy by surgical centre in England and Wales.



NATCAN: maintain key features

Contents lists available at [ScienceDirect](#)



Patient-Reported Functional Outcomes After Conventionally Fractionated Prostate Cancer: A National Cohort

[E. Cowling, PhD¹](#); [Matthew G. Parry, MBChB, MSc²](#); [Susan C. Charman, MSc¹](#); [van der Meulen, PhD¹](#); and [Charman¹, van der Meulen^{a,b}](#)

Cancer Epidemiology | [Open Access](#) | 

Impact of cancer service centralisation on the radical treatment of men with high-risk and locally advanced prostate cancer: A national cross-sectional analysis in England

[Matthew G Parry](#)
[Noel W Clarke](#)



PERSONAL VIEW | [VOLUME 22, ISSUE 5, E207-E215, MAY 2021](#)

Public reporting of outcomes in radiation oncology: the National Prostate Cancer Audit

[Ajay Aggarwal, PhD](#)   • [Julie Nossiter, PhD](#) • [Matthew Parry, PhD](#) • [Arunan Sujenthiran, MD](#) • [Prof Anthony Zietman, MD](#) • [Prof Noel Clarke, ChM](#) • et al. [Show all authors](#)

NATCAN: innovations

- Use of single resource of linked datasets for all cancer audits
- Use of rapid cancer registration data as well as gold-standard registration data
- Shorten delays & increase frequency of reporting – quarterly
- ‘State of the Nation’ reports (10 pages max, 5 recommendations)
- Greater focus on Quality Improvement
 - aiming to ‘close the audit cycle’

NATCAN: timeline

First year (from Oct 2022)

- Establish organisational & governance structures
- Develop NATCAN communication strategy
- Creation of common data access channels
- Quality improvement (QI) strategy & planning

From second year onwards (from Oct 2023)

- Reporting & feedback of audit results start (quarterly & annual)
- Design QI initiatives
- Roll out of ‘full audit cycle projects’

NPCA scoping for new phase of the audit Q1 2023. Monthly routine data submissions will continue

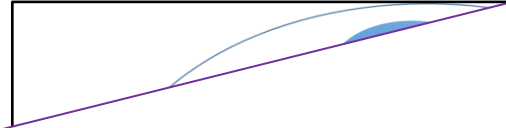
NPCA moves into the centre from 1st July 2023

NATCAN: highlights

Research and development platform

Externally funded
National perspective
International collaborations

Ongoing expansion of linked data research



Methodological development

Development of key performance indicators
Supporting 'fair' comparisons of service providers

Patient-Public Involvement Forums

One for each audit
Links with patient charities

Thank you for your support since 2013!

Epidemiology -> QI

	<i>service evaluation</i>	<i>clinical audit</i>
<i>processes</i>	what are we doing?	are we doing what we should be doing?
<i>characteristics</i>		
<i>outcomes</i>	what is the outcome of what we are doing?	are we doing it well (compared with others)?

Formal advice and support

Clinical Reference Groups
Technical advisory group
Quality Improvement group
Academic links

Targeted communication strategy

Providers / clinicians
Professional organisations
Patients and charities
Commissioners
Regulators

Innovative quality improvement

Continuous monitoring – control charts
Modified 'plan-do-study-act' cycles

Website development

Audit dashboards
Data visualisation